

BOBCAT COMPANY PRICE PAGES
NA LOADERS – MINI TRACK



Please note the following when using Bobcat Price Pages:

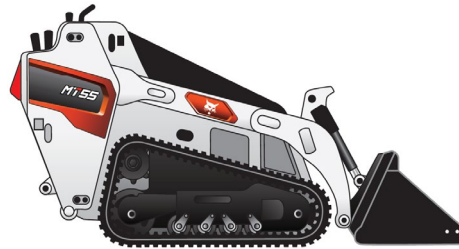
- All prices are shown in U.S. dollars.
- Check BobcatNET Pricing Homepage for current Canadian exchange rate.
- To ensure having the correct Part Number for a Dealer Installed Accessory, obtain the loader model and serial number and check with Dealer Parts Department.
- For current Dealer Installed Accessories pricing, reference BobQuote or Dealer Parts Department.
- Prices and specifications are subject to change without notice.

THE FOLLOWING UPDATES HAVE BEEN MADE TO THIS DOCUMENT:

Date	Description of Change
1/1/2015	Effective Thursday, January 1st, 2015 Bobcat Company has adjusted the SLP of select options and power units.
10/25/2015	Effective Friday, September 25, 2015 Bobcat Company has added MT85 power unit, model options, and model accessories.
3/14/2016	Effective Monday, March 14, 2016 Bobcat Company has model accessories.
10/1/2017	Effective Monday, October 2, 2017 Bobcat Company has adjusted the SLP of select options and power units.
5/1/2018	Effective Tuesday, May 1, 2018 Bobcat Company has adjusted the SLP of select options and power units
1/1/2019	Updated SLPs for January 1st 2019
7/10/2019	Converted word file to excel
3/20/2020	MT100 Added to Price Pages

**Certain Specification(s) are based on engineering calculations and are not actual measurements. Specification(s) are provided for comparison purposes only and are subject to change without notice. Specification(s) for your individual Bobcat equipment will vary based on normal variations in design, manufacturing, operating conditions, and other factors.*

MT55
Bobcat Mini Track Loader



Standard Equipment

- 24.8 HP Tier 4 Diesel Engine
- Auxiliary Hydraulics
- Attachment interface; Bob-Tach or CII Common Industry Interface
- Built-in Tie Down and Crane/Lift locations
- Continuous Flow Shutoff Lever
- Hydrostatic Drive Train
- Hourmeter, Engine Temperature and Fuel Gauges, Voltmeter & Warning Lights
- Lift Arm Lockout with Manual Bypass
- Lift Arm Support
- Tilt Lockout
- Liquid-Cooled Diesel Engine
- Neutral Start Interlocks
- Parking Brake
- Reverse Travel Stop Panel
- Spark Arrestor Muffler
- Tilt Steering
- Tracked Traction System: Rubber, 7 in. wide
- Warranty: 12 Months, unlimited hours

Quick Specs

	<u>MT55</u>
Rated Operating Capacity.....	550 lbs.
Carry Position ROC*.....	800 lbs.
Engine Model.....	D902-E4B
Engine Fuel/Cooling.....	Diesel/Liquid
Horsepower.....	24.8 HP
Auxiliary Hydraulics Flow.....	12.0 GPM
Auxiliary PSI.....	2900 PSI
Travel Speed.....	3.5 MPH
Operating Weight.....	2,610 lbs.
Shipping Weight.....	2,395 lbs.
Width (w/out Bucket).....	35.6 in.
Length (w/ Bucket).....	93.1 in.
Ground Contact Length.....	34.0 in.
Reach @ Maximum Height.....	18.2 in.
Height to Hinge Pin.....	71.3 in.

*Carry Position ROC is measured as 35% of tip when the lift arm is raised 6" and bucket is fully rolled back

MT55
Bobcat Mini Track Loader

Part Number	Description	Mini Track Loader	SLP in US \$
-------------	-------------	-------------------	--------------

M0045	MT55 Mini Track Loader (Equipped with T4 Engine)		\$23,022
-------	--	--	----------

Part Number	Description	Individual Factory Options	SLP in US \$
-------------	-------------	----------------------------	--------------

M0045-R09-C02	9.8" Wide Track Option..... Machine width is 41.4"		\$691
---------------	---	--	-------

Part Number	Description	Dealer Installed Accessories - Order From Sales	SLP in US \$
-------------	-------------	---	--------------

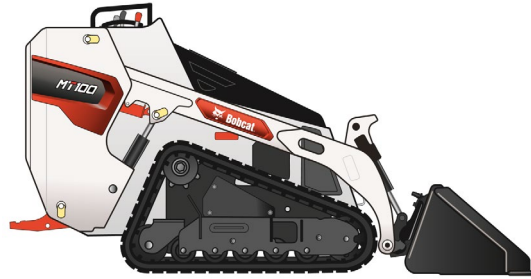
6737684	Ride-On Platform..... Est. Install Time: 0.5 hr.		\$536
7286202	Bobtach Interface Kit..... Est. Install Time: 0.5 hr.		\$651
7286203	Common Industry Interface Kit (CII)..... Est. Install Time: 0.5 hr.		\$651

Part Number	Description	Dealer Installed Accessories - Order From Parts	SLP in US \$
-------------	-------------	---	--------------

Part numbers for kits in this section are current as of Apr. 2020 and pertain to current loader models as of that date. To ensure having the correct Part Number for a Dealer Installed Accessory, obtain the model and serial number and check with Dealer Parts Department. For the most current Dealer Installed Accessories pricing, refer to BobQuote or Dealer Parts Department.

6732656	Attachment Control Kit Required for snowblower/stump grinder. Est. Install time: 1.0 hrs.		\$ _____
7126035	Case Drain Kit Est. Install Time: 1.5 hrs.		\$ _____
6693928	Catalytic Exhaust Purifier Est. Install Time: 1.0 hrs.		\$ _____
7124264	Engine Block Heater Est. Install Time: 1.0 hrs.		\$ _____
7281909	Light Kit Est. Install Time: 2.0 hrs.		\$ _____
7348547	Shutdown Kit Shuts down the engine when the engine oil pressure is too low, or when engine coolant temperature is too high, or the hydraulic oil temperature is too high.(Serial numbers below B3TR11001 on MT85 and B38T11001 and B38U11001 on MT55 that also didn't complete SL5435, use 7101695)		\$ _____
7153411	Aux Hydraulics Mode Switch Kit Needed to control M06 Backhoe attachment on MT55 S/N A3WT11001 & above. Est. Install time 0.5 hrs.		\$ _____
6901742	Bobcat Mini Loader Safety Video		\$ _____
6904762	Bobcat Operator Safety DVD Includes both English and Spanish versions on one DVD.		\$ _____

MT100
Bobcat Mini Track Loader



Standard Equipment

- 24.8 HP Tier 4 Diesel Engine
- Attachment interface; Bob-Tach or CII Common Industry Interface
- Auxiliary Hydraulics
- Built-in Tie Down and Crane/Lift locations
- Continuous Flow Shutoff Pedal
- Counterweights - Includes (4) 30 pound weights
- Hourmeter, Engine Temperature and Fuel Gauges, Voltmeter & Warning Lights
- Hydrostatic Drive Train
- ISO Pattern Joystick Travel Controls
- Lift Arm Lockout with Manual Bypass
- Lift Arm Support
- Liquid-Cooled Diesel Engine
- Neutral Start Interlocks
- Parking Brake
- Spark Arrestor Muffler
- Storage Cubby
- Tilt Lockout
- Tracked Traction System: Rubber, 7 in. wide
- Warranty: 12 Months, unlimited hours

Quick Specs

	<u>MT100</u>
Rated Operating Capacity - Counterweights in Undercarriage Position.....	1,000 lbs
Rated Operating Capacity - Counterweights in rear position on Uprights.....	1,060 lbs
Carry Position ROC* - Counterweights in Undercarriage Position.....	1,260 lbs
Carry Position ROC* - Counterweights in rear position on Uprights.....	1,300 lbs
Engine Model.....	D902-E4B
Engine Fuel/Cooling.....	Diesel/Liquid
Horsepower.....	24.8 HP
Auxiliary Hydraulics Flow.....	12.0 GPM
Auxiliary PSI.....	2900 PSI
Travel Speed Fwd.....	4.1 MPH
Travel Speed Rev.....	2.9 MPH
Operating Weight.....	3390 lbs.
Shipping Weight.....	3035 lbs.
Width (w/out Bucket).....	35.6 in.
Length (w/ Bucket).....	106.2 in.
Ground Contact Length.....	41.4 in.
Reach @ Maximum Height.....	18.7 in.
Height to Hinge Pin.....	81.0 in.

*Carry Position ROC is measured as 35% of tip when the lift arm is raised 6" and bucket is fully rolled back

MT100
Bobcat Mini Track Loader

Part Number Description Mini Track Loader SLP in US \$

M0115 MT100 Mini Track Loader..... \$28,967

Part Number Description Individual Factory Options SLP in US \$

M0115-R09-C02 9.8" Wide Track Option..... \$967
 Machine width is 41.4". Est. Install time: 0.5 hr.

Part Number Description Dealer Installed Accessories - Order From Sales SLP in US \$

7286202 Bobtach Interface Kit..... \$651
 Est. Install Time: 0.5 hr.

7286203 Common Industry Interface Kit (CII)..... \$651
 Est. Install Time: 0.5 hr.

Part Number Description Dealer Installed Accessories - Order From Parts SLP in US \$

Part numbers for kits in this section are current as of Apr. 2020 and pertain to current loader models as of that date. To ensure having the correct Part Number for a Dealer Installed Accessory, obtain the model and serial number and check with Dealer Parts Department. For the most current Dealer Installed Accessories pricing, refer to BobQuote or Dealer Parts Department.

7275444 Attachment Control Kit..... \$ _____
 Required for snowblower/stump grinder. Est. Install time: 1.0 hrs.

7279903 Case Drain Kit..... \$ _____
 Est. Install Time: 1.5 hrs.

6693928 Catalytic Exhaust Purifier..... \$ _____
 Est. Install Time: 1.0 hrs.

7124264 Engine Block Heater..... \$ _____
 Est. Install Time: 1.0 hrs.

7281909 Light Kit..... \$ _____
 Est. Install Time: 2.0 hrs.

7348547 Shutdown Kit..... \$ _____
 Shuts down the engine when the engine oil pressure is too low, or when engine coolant temperature is too high, or the hydraulic oil temperature is too high.(Serial numbers below B3TR11001 on MT85 and B38T11001 and B38U11001 on MT55 that also didn't complete SL5435, use 7101695)

6901742 Bobcat Mini Loader Safety Video..... \$ _____

6904762 Bobcat Operator Safety DVD..... \$ _____
 Includes both English and Spanish versions on one DVD.